

**2 NEW TEAPOT DESIGNS**  
**BY**  
**ROGER MICHELL LUSTRE POTTERY**



**“ FRUITS ET LEGUMES THEMATIQUE ”**

SEPTEMBER 2007



**F**rench cuisine benefits from some of the finest fruits and vegetables in Europe. They can be bought anywhere. These teapots bring together some of the luxuries of the French food market that we enjoy today and some of the English tradition contained within 18th century craft teapots made in Staffordshire. The results so far are 2 rather beautiful teapots.



Artichoke Teapot 2007 by Roger Michell Lustre Pottery



The artichoke teapot is the first in Lustre Pottery's series of designed, sculptured teapot shapes.

It has a short, creamy white spout, a knopped finial and an extravagant, extruded handle. Five leaves are secured around the base of the finial and fit the pot exactly and uniquely.

Deliciously decorated with green shades that deepen towards the base of the teapot. Here, the footring colors to a marine green, conical stand upon a wafer-slim, circular base darkly painted in black or chocolate; this color is reflected in occasional brush marks across the surface of the teapot body and symmetrically on each leaf of the lid. Etched lines and cross-brush strokes add a rich, textural finish.

Includes artists signature and edition number.

19.5 cms. high (7.5")





Top 4 pics: the artichoke teapot photographed from 4 different angles

Above left: the teapot spout and finial

Above right: the footing

Below left: finial & flange

Pineapple Teapot 2007 by Roger Michell Lustre Pottery



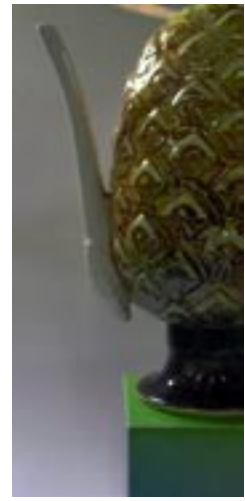
Two pineapples, one gently leaning. This teapot is the second in Lustre's series of designed, sculptured teapot shapes. Although intended to stand completely upright some, overcome by the heat, exited the kiln with a short backward or forward lean. These teapots received such an enthusiastic response; we decided to offer them for sale.

The pineapple teapot has an elegant, classical spout and is perfectly balanced by a well-made handle with a good curve; both are joined to the pot by a sheath of leaves. The lid measures 10 cms. high and is made up of identically sized leaves, individually cast and joined at their base around a central column. A pale green glaze gathers in thick pools along their centres.

The symmetry that is contained within the surface of the teapot body is achieved through the uniformity of the triangular shapes - modelled entirely by hand. Splashes of bright yellow deepen to mustard and pale brown, eventually darkening to a pale-ish amulet green.

The footing becomes a flared column with lines etched into the black surface to reveal the white of the clay beneath; the edges are dotted red which is also picked up on the surface of the body as red dots subtly occasion the golden surface.

A tall teapot, 32 cms. high (12.5"), stands available to order



Anti-clockwise from top right:

1. teapot spout
2. lid
3. teapot and lid
4. surface detail
5. hand painted mark
6. footring



## Price Guide

artichoke teapot £89

pineapple teapot £85

teapot stands £25

Teapot edition numbers may be  
ordered from a limited edition of  
100 per teapot